



# REALITi SimScope

## ADVANCING AUSCULTATION TRAINING IN REALITi 360

In collaboration with Cardionics, a global leader in auscultation simulation products, iSimulate developed the REALITi SimScope for the REALITi 360 simulation ecosystem. REALITi SimScope is an electronic training stethoscope, created for simulation practice with Standardized Patients and manikin-based auscultation training. REALITi SimScope is perfectly suited for OSCE (Objective Structured Clinical Examination) or any other examination format from pre-hospital to ICU.

## ➤ HELP YOUR STUDENTS MASTER THEIR AUSCULTATION SKILLS WITH REALiTi SimScope



- + Learn how to distinguish between normal and abnormal respiratory and circulatory sounds
- + Train the diagnosis of bowel disorders and their variations
- + Practice building a detailed picture of the patient to understand the cause and extent of heart, lung or bowel diseases
- + Practice essential communication skills with patients and medical staff

REALiTi SimScope requires any of the REALiTi 360 versions to function (REALiTi Go 1022862, REALiTi Plus 1022815 or REALiTi Pro 1022816) and is accessed through its simulation ecosystem to provide users with the comprehensive sounds library by Cardionics.

### Included in the REALiTi SimScope Auscultation Module:

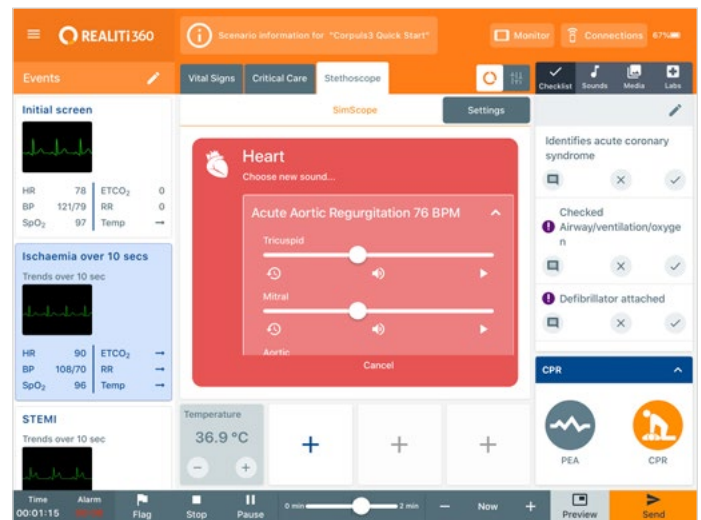
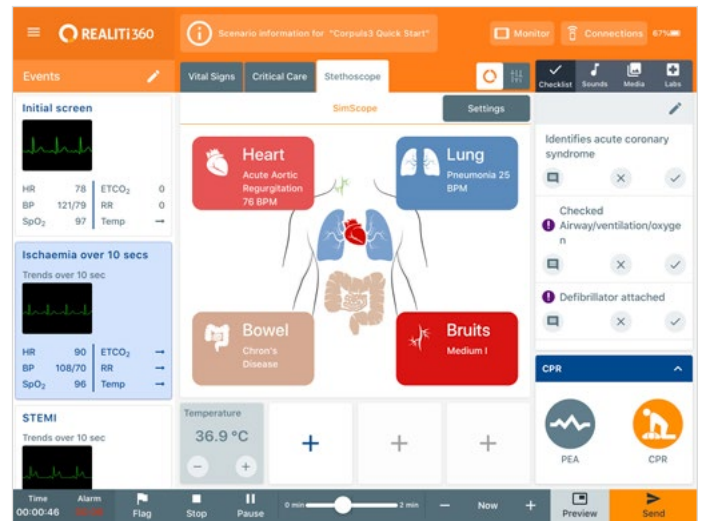
- REALiTi SimScope Auscultation Training Stethoscope
  - Standard adult sound library consisting of 20 heart, 41 lung, 4 bowel sounds and 1 bruit sound
  - Carrying case
  - User manual
  - USB cable
- Item No. 1022954



REALiTi SimScope requires a licensed REALiTi 360 device to function.

Combine REALiTi SimScope with any of the below ecosystems to enhance OSCE training:

- REALiTi Go Item No. 1022862
- REALiTi Plus Item No. 1022815
- REALiTi Pro Item No. 1022816



SCAN THE QR CODE TO FIND OUT MORE ABOUT THE REALiTi SimScope AUSCULTATION MODULE

