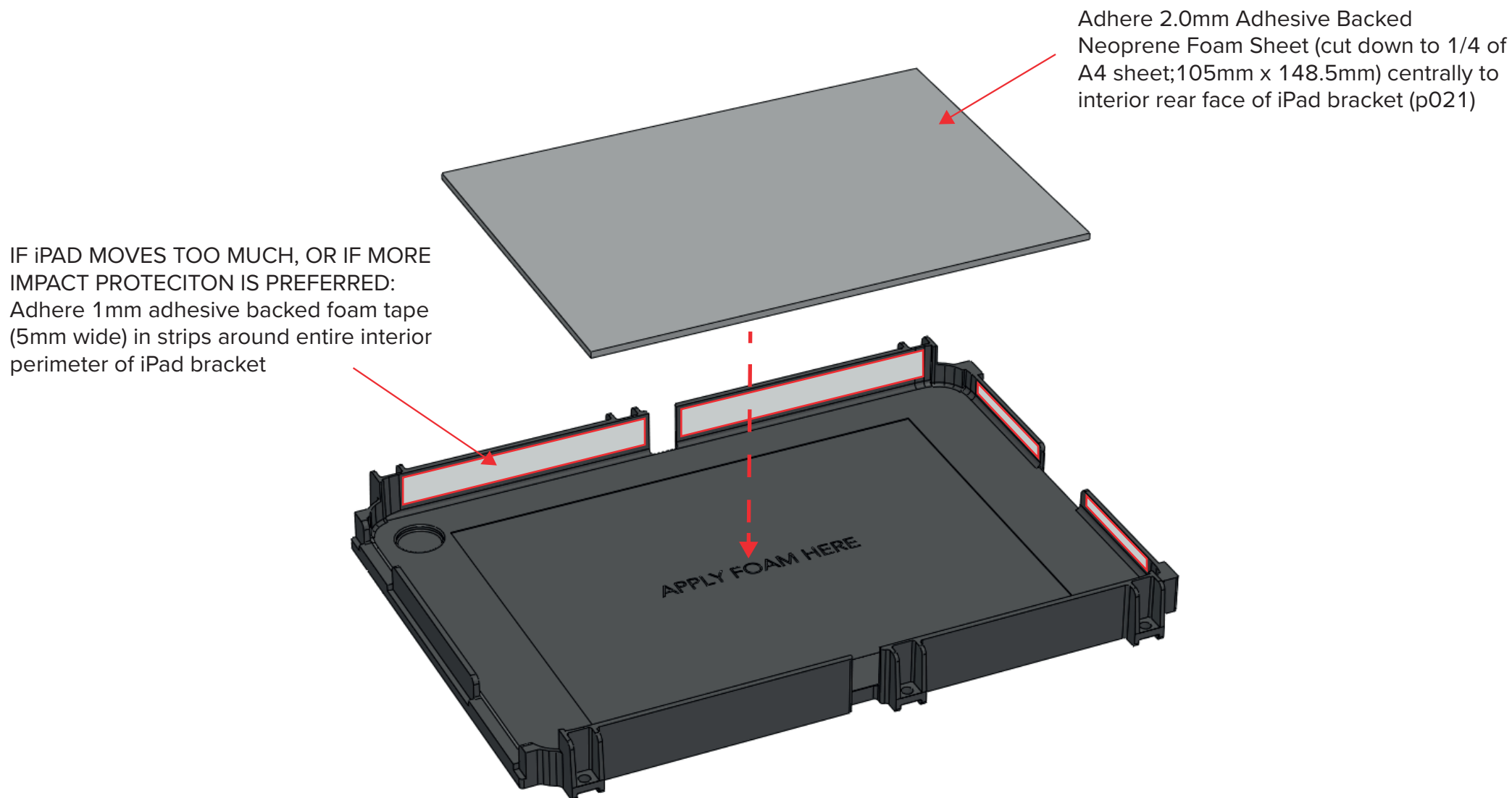




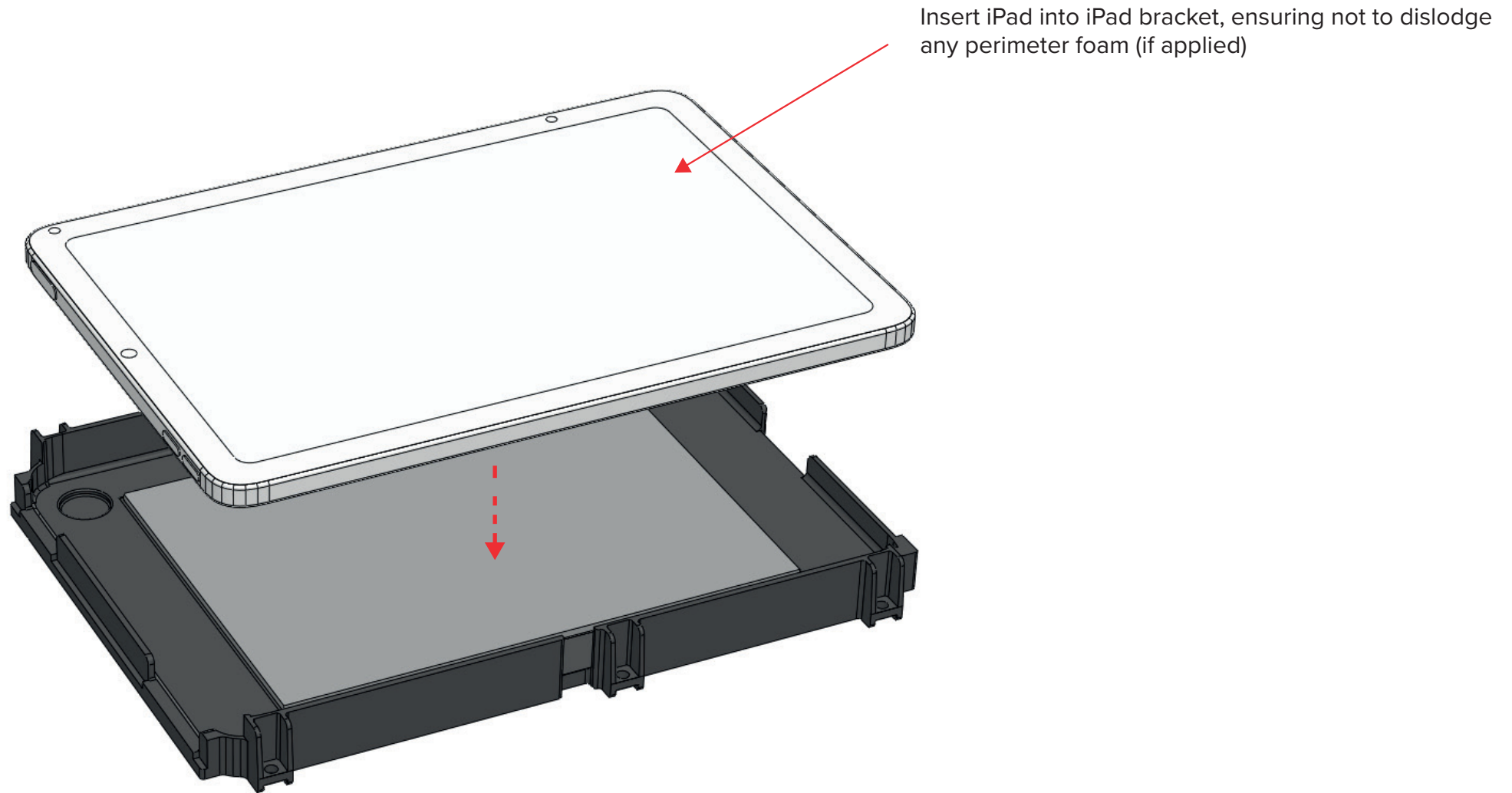
ASSEMBLY GUIDE

Step 1 – Apply foam to iPad Brackets



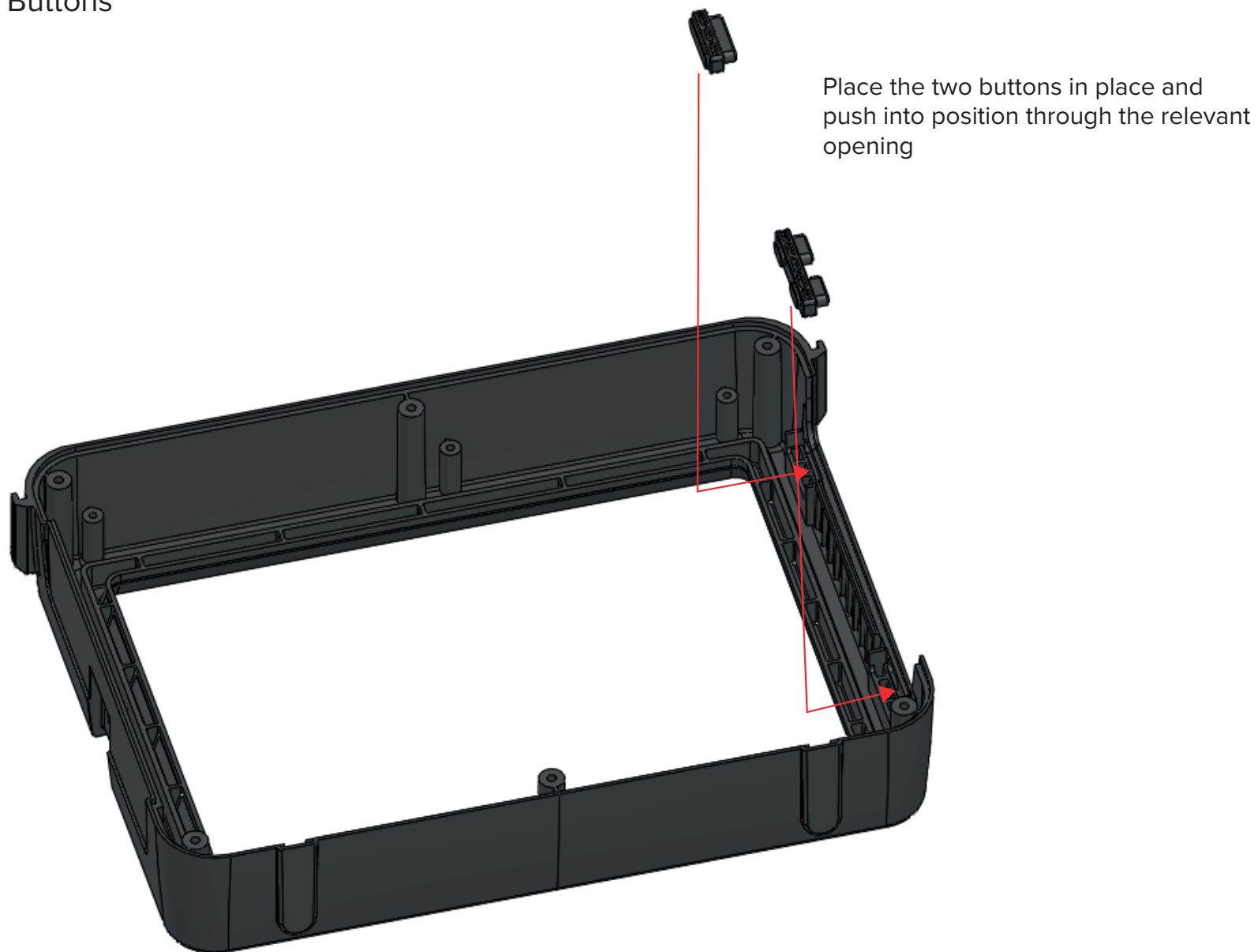
ASSEMBLY GUIDE

Step 2 – Place iPad into iPad Bracket



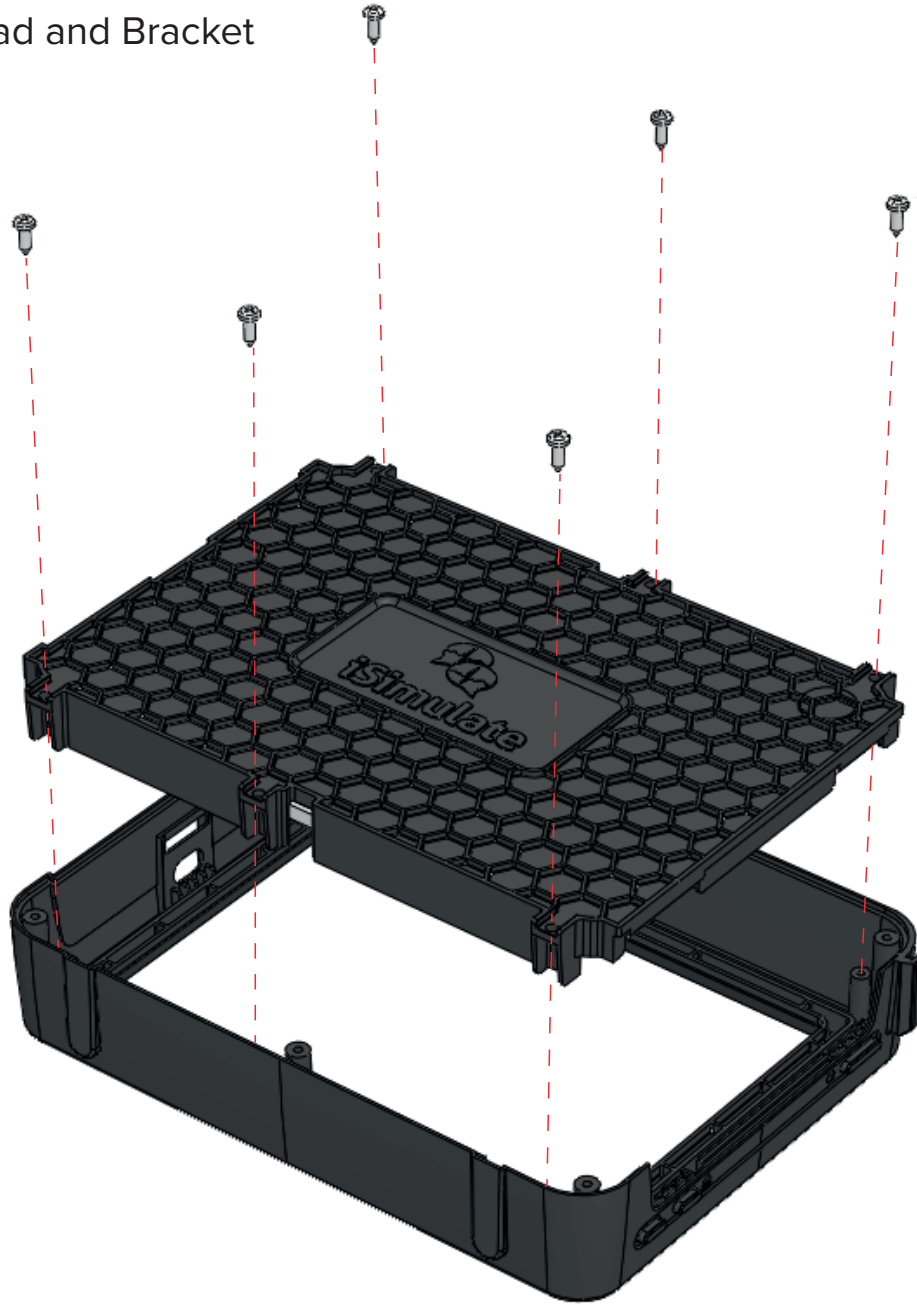
ASSEMBLY GUIDE

Step 3 – Install Buttons



ASSEMBLY GUIDE

Step 4 – Install iPad and Bracket



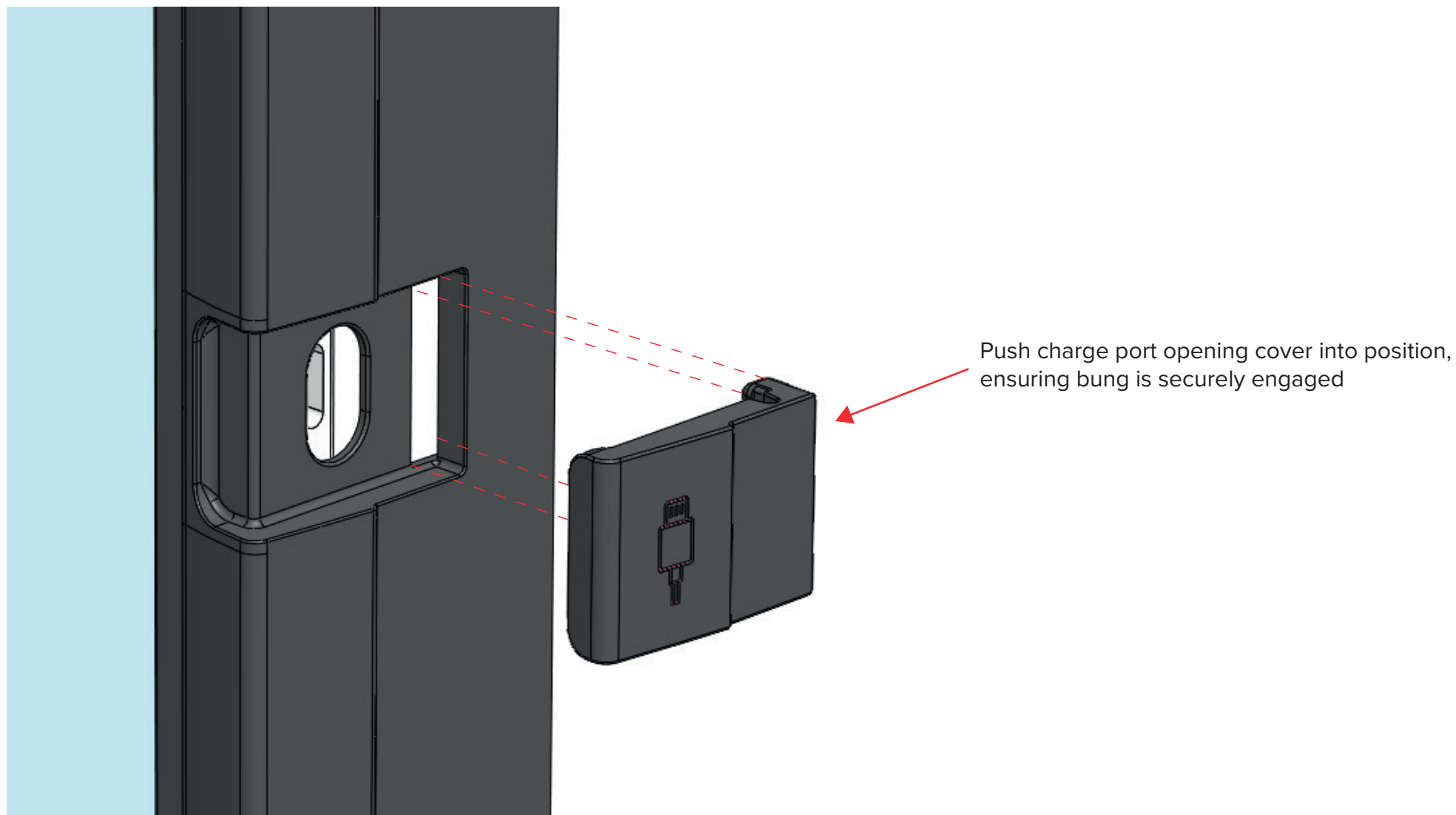
6 x 4g Pan Phillips Screws
Length: 3/8" (9mm)

Drop iPad Bracket (containing iPad) down into front assembly. Take care to ensure that the two buttons do not become dislodged, and that they stay aligned with the relevant button on the iPad.

The iPad can be supported by placing a hand back through the screen opening to support the face of the iPad while lowering it into place.

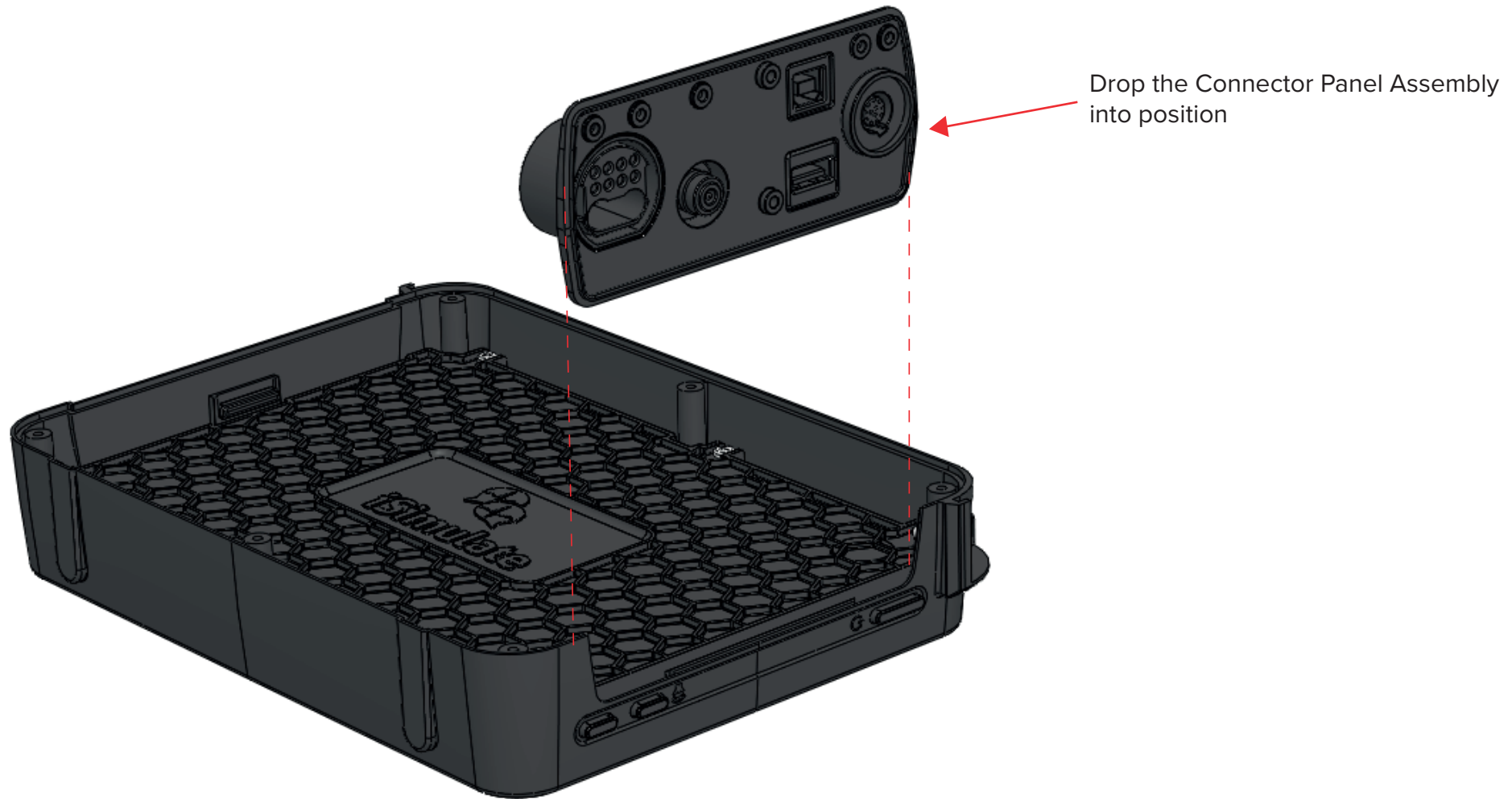
ASSEMBLY GUIDE

Step 5 – Install Charge Port Cover



ASSEMBLY GUIDE

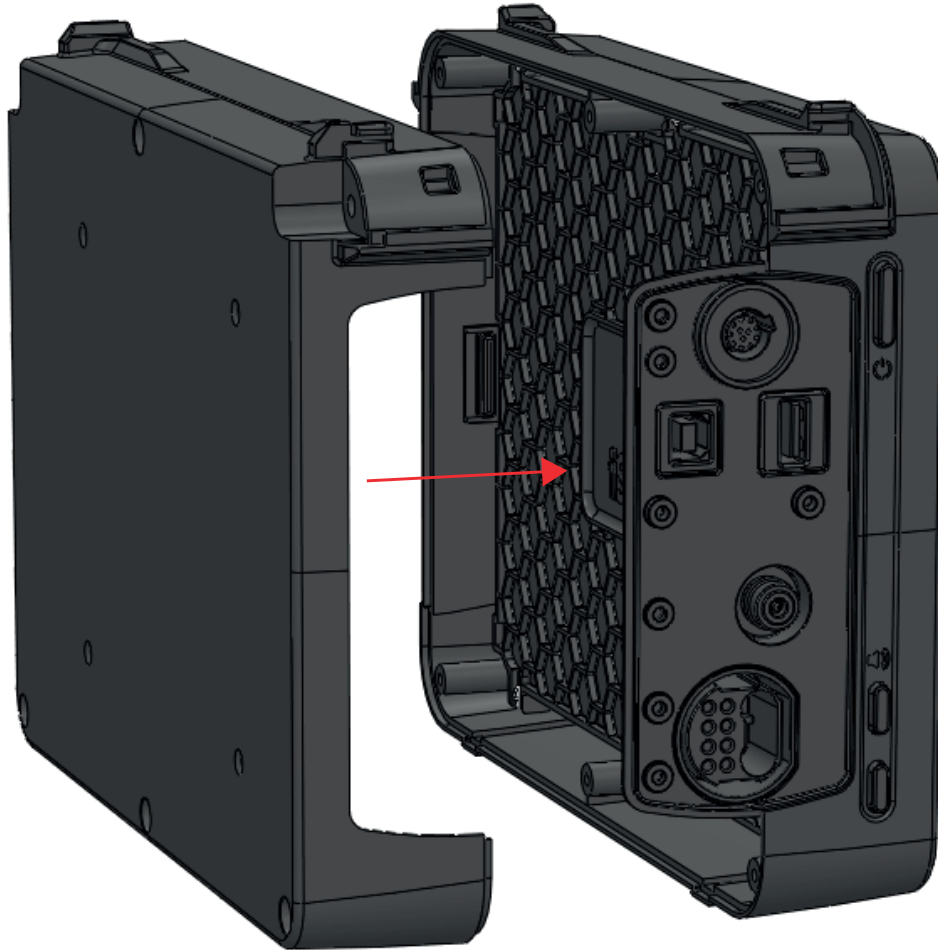
Step 6 – Install Connector Panel



ASSEMBLY GUIDE

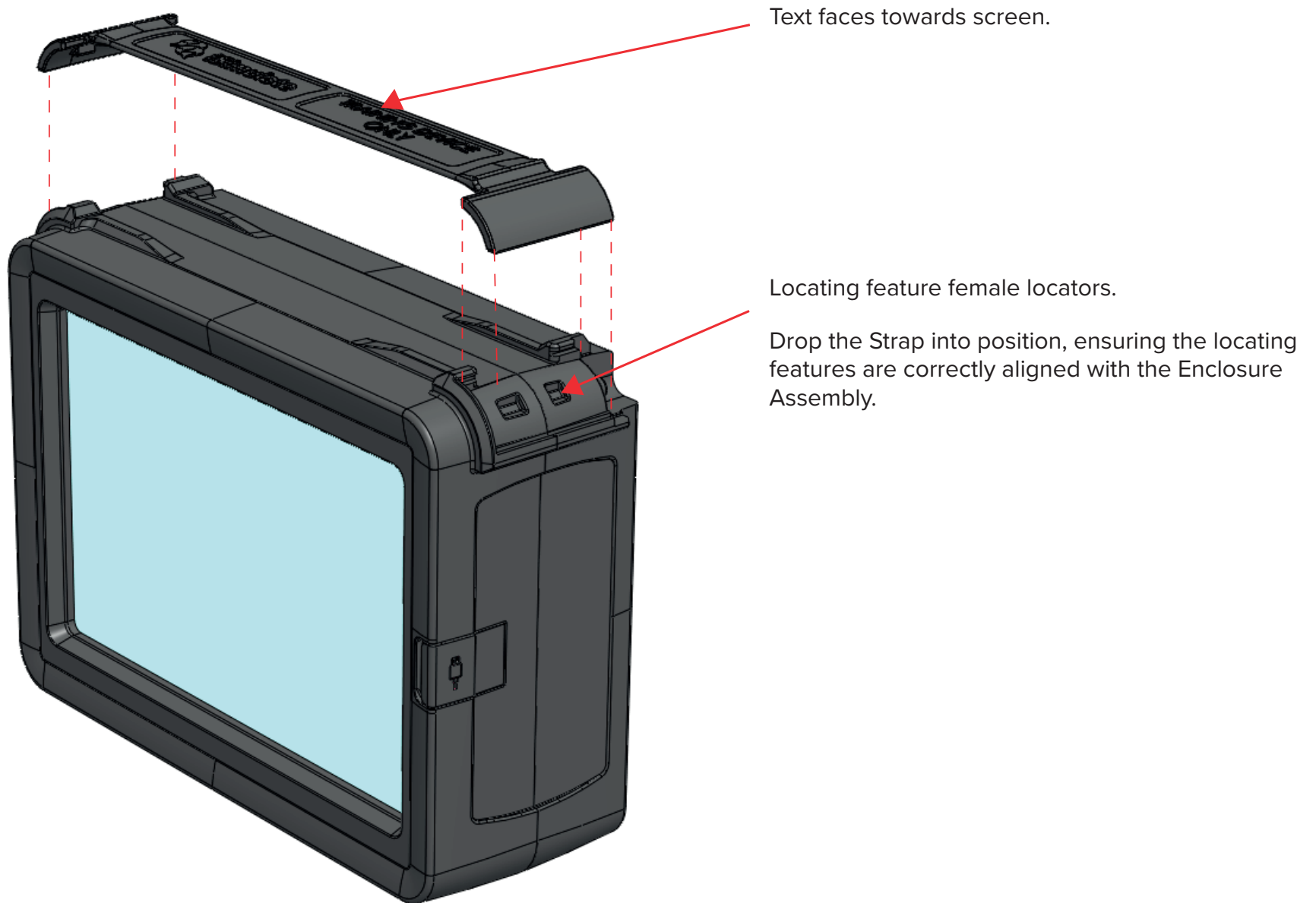
Step 7 – Bring together Front and Rear Enclosure Assemblies

Bring together the Front and Rear Enclosure sub-assemblies, ensuring the parting lines align and the Connector Panel is captured correctly.



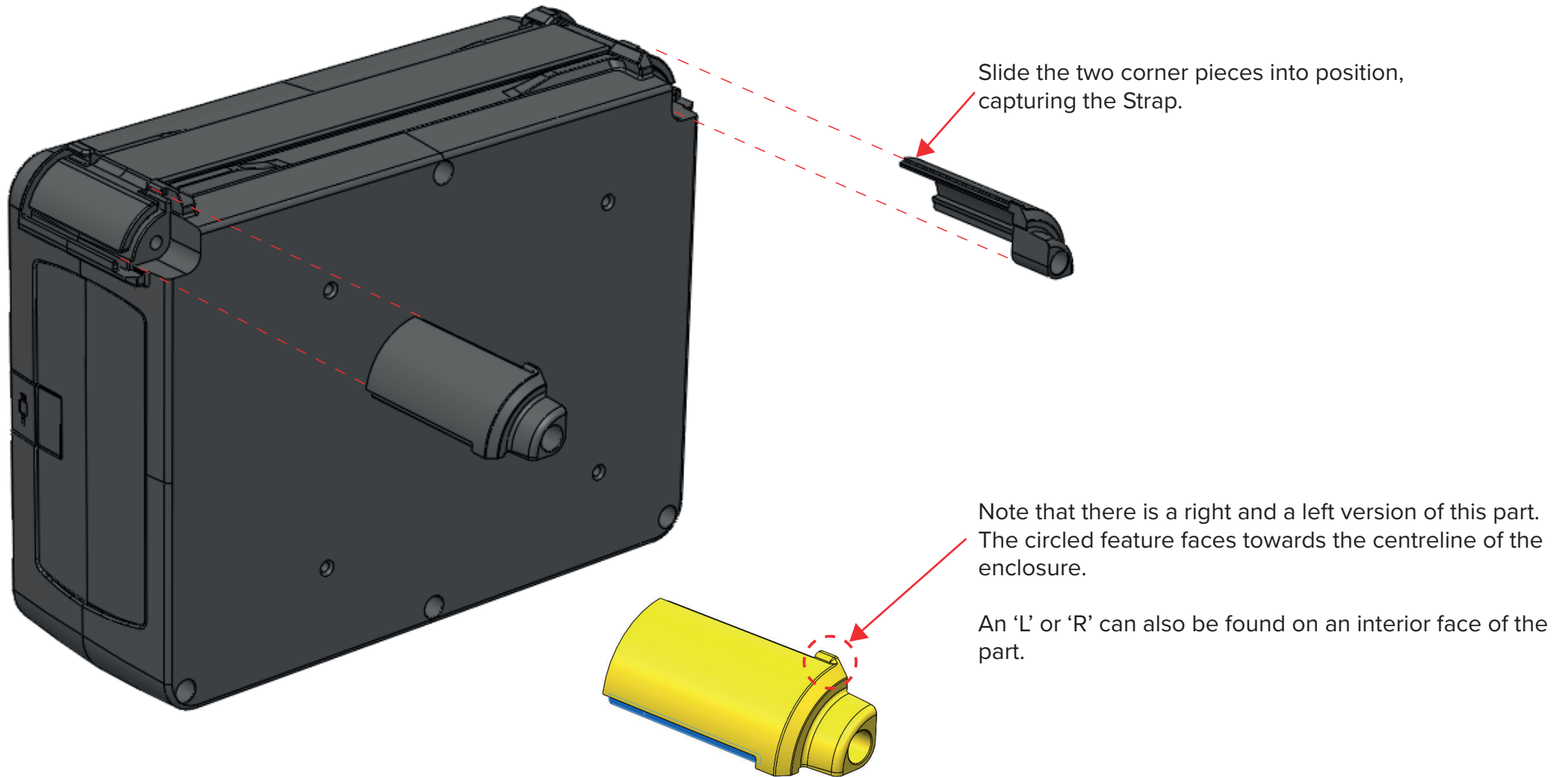
ASSEMBLY GUIDE

Step 8 – Install Strap



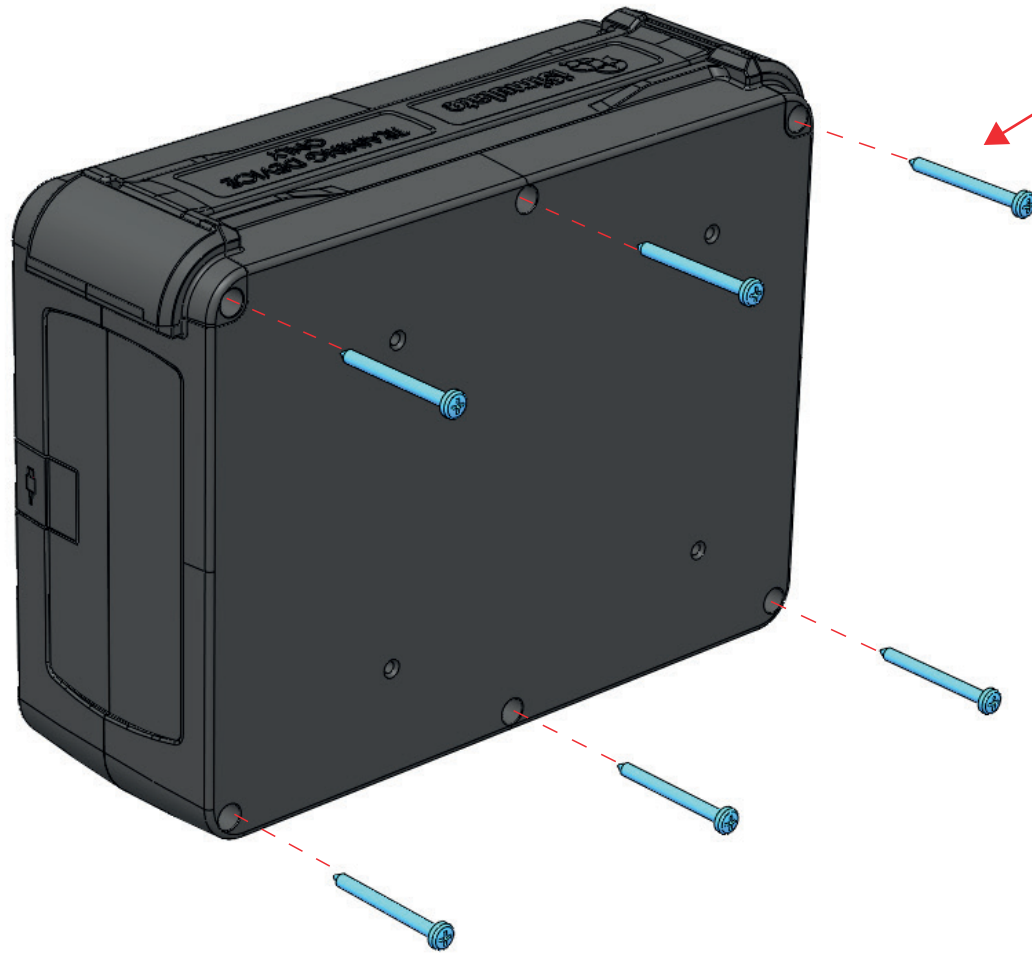
ASSEMBLY GUIDE

Step 9 – Install Corner Braces



ASSEMBLY GUIDE

Step 10 – Fasten Enclosure halves together

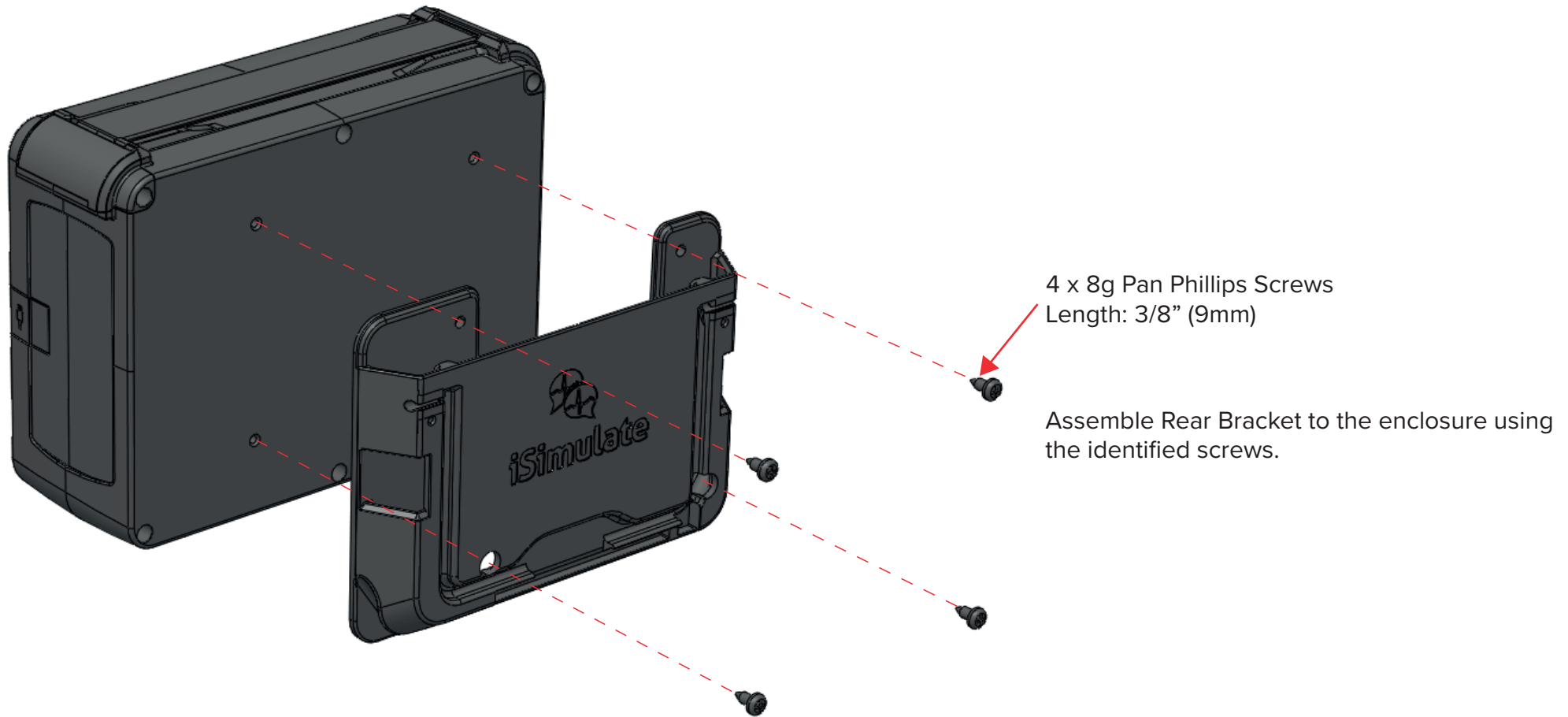


6 x 6g Pan Phillips Screws
Length: 1-1/2" (38mm)

Assemble enclosure halves together using the identified screws.

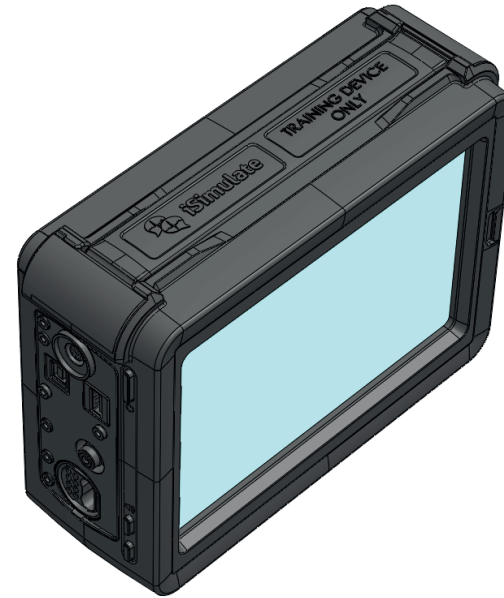
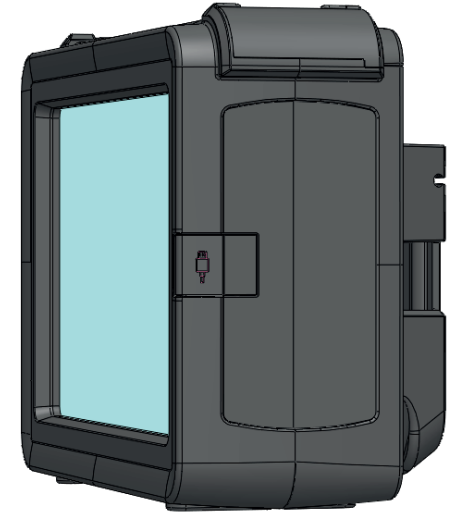
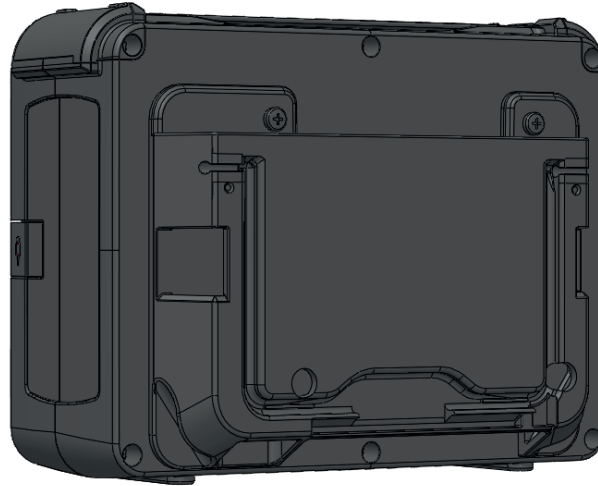
ASSEMBLY GUIDE

Step 11 – Install Rear Bracket



ASSEMBLY GUIDE

Assembly Complete



ASSEMBLY GUIDE



3B Scientific GmbH

Ludwig-Erhard-Straße 20 • 20459 Hamburg • Germany
Phone: + 49 (0)40-73966-0 • Fax: + 49 (0)40-73966-100
3bscientific.com • info@3bscientific.com



Tempus LS iPad Mini Case