

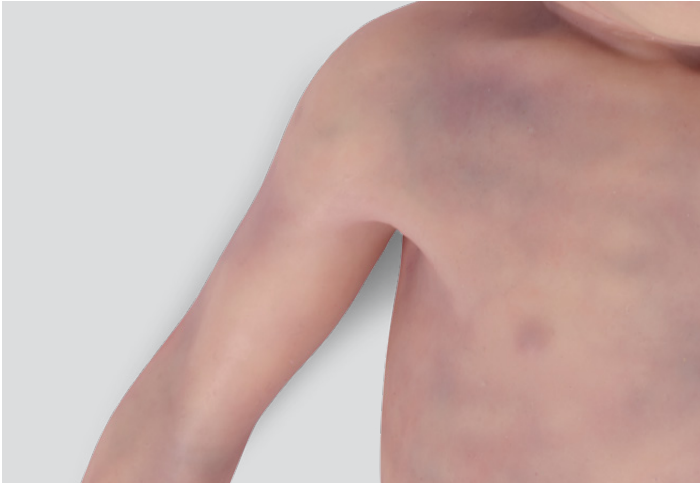


## **LIFECAST BABY V**

### TRAINING FOR COMPASSIONATE AND SKILLED CARE

The loss of a newborn is a profound and delicate situation. Healthcare professionals must be prepared to provide both clinical and emotional support. Lifecast Baby V is designed to train professionals in both resuscitation efforts and recognition of life extinct (ROLE), ensuring realistic, hands-on learning.

This anatomically accurate, pre-term (28-29 weeks) baby features lifelike details, including livor mortis (post-mortem blood pooling), cyanotic discoloration, and blue lips, to create an authentic training scenario. It supports essential clinical skills such as intubation, CPR, ventilation techniques, umbilical drug administration, and post-mortem care.



- Realistic appearance – Blood pooling, blue lips, and skin discoloration
- True-to-life weight for an authentic feel
- Recognition of life extinct (ROLE) – Realistic presentation to facilitate sensitivity training
- Resuscitation training – Supports CPR, intubation, ventilation, and high-frequency oscillatory ventilation (HFOV)

Lifecast Baby V 1026055

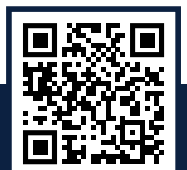
## LIFECAST BABY RANGE

Lifecast has worked with leading neonatologists to create the realistic and comprehensive range of pre-term and term baby manikins available today. These models provide essential training for neonatal care, resuscitation, airway management, bereavement care, and handling fragile babies.

The Lifecast Baby Range Includes:

- Miscarriage babies – 8-week & 18-week gestation models for early pregnancy loss training.
- Micro-Premie Baby – 22-23 weeks gestation for extreme pre-term neonatal care.
- Pre-Term Baby – 28-29 weeks gestation for neonatal intensive care training.
- Term Baby – 36+ weeks gestation for general newborn care, resuscitation, and assessment.

IF YOU HAVE ANY QUESTIONS OR NEED SUPPORT, PLEASE SCAN HERE



3B Scientific Group

Headquarters · Ludwig-Erhard-Strasse 20 · 20459 Hamburg · Germany · [3bscientific.com](http://3bscientific.com)